

Anti-CPS1 Monoclonal Antibody
Catalog # ABO14723**Specification**

Anti-CPS1 Monoclonal Antibody - Product Information

Application	WB, IHC, IF, ICC, IP
Primary Accession	P31327
Host	Rabbit
Isotype	Rabbit IgG
Reactivity	Rat, Human, Mouse
Clonality	Monoclonal
Format	Liquid

Description

Anti-CPS1 Monoclonal Antibody . Tested in WB, IHC, ICC/IF, IP applications. This antibody reacts with Human, Mouse, Rat.

Anti-CPS1 Monoclonal Antibody - Additional Information

Gene ID 1373

Other Names

Carbamoyl-phosphate synthase [ammonia], mitochondrial, 6.3.4.16, Carbamoyl-phosphate synthetase I, CPSase I, CPS1

Application Details

WB 1:500-1:2000
IHC 1:50-1:200
ICC/IF 1:50-1:200
IP 1:50

Contents

Rabbit IgG in phosphate buffered saline, pH 7.4, 150mM NaCl, 0.02% sodium azide and 50% glycerol, 0.4-0.5mg/ml BSA.

Immunogen

A synthesized peptide derived from human CPS1

Purification

Affinity-chromatography

Storage

Store at -20°C for one year. For short term storage and frequent use, store at 4°C for up to one month. Avoid repeated freeze-thaw cycles.

Anti-CPS1 Monoclonal Antibody - Protein Information

Name CPS1

Function

Involved in the urea cycle of ureotelic animals where the enzyme plays an important role in

removing excess ammonia from the cell.

Cellular Location

Mitochondrion. Nucleus, nucleolus. Cell membrane {ECO:0000250|UniProtKB:Q8C196}; Peripheral membrane protein; Extracellular side {ECO:0000250|UniProtKB:Q8C196} Note=Localizes to the cell surface of hepatocytes {ECO:0000250|UniProtKB:Q8C196}

Tissue Location

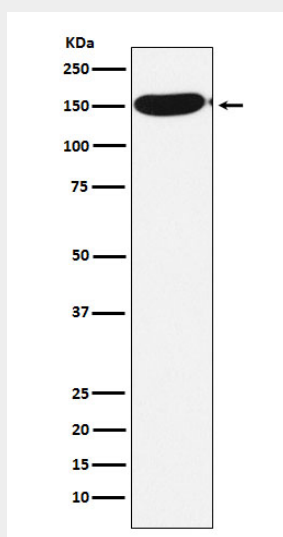
Primarily in the liver and small intestine.

Anti-CPS1 Monoclonal Antibody - Protocols

Provided below are standard protocols that you may find useful for product applications.

- [Western Blot](#)
- [Blocking Peptides](#)
- [Dot Blot](#)
- [Immunohistochemistry](#)
- [Immunofluorescence](#)
- [Immunoprecipitation](#)
- [Flow Cytometry](#)
- [Cell Culture](#)

Anti-CPS1 Monoclonal Antibody - Images



Western blot analysis of CPS1 expression in HeLa cell lysate.